A person's hands are shown opening a metal enclosure door. The door is hinged and is being lifted upwards. The background is a blurred industrial setting. The entire image has a blue color cast.

No compromise.
No inconvenience.
No delay.

We're **indEx**

Your solution partner.

World class quality enclosure solutions for hazardous and industrial area applications

No compromise. No inconvenience. No delay.

High quality, custom size enclosures with prepared entries at standard enclosure prices, supplied at a lead-time that suits you. This is what is possible when combining 70 years of enclosure & fabrication manufacturing experience, the latest metal fabrication technology with breakthrough logistical thinking.

Whether you require one highly customised enclosure or a thousand standard size ones our UK manufacturing facility is ready to deliver on your hazardous and industrial enclosure needs now.



3



- ATEX Zone 1, 21, 2 & 22 Control Stations & Gear

4



- HMI & Matrix Screens

5



- iCE: indEx Cabinet Enclosures

6



- iTB: indEx Terminal Boxes

7



- iSTB: indEx Terminal Boxes

8



- iTBQT: indEx Terminal Boxes

9



- iGRP: indEx Terminal Boxes

10



- Custom Design

11



- Line Bushings
- Ex d Flameproof Enclosures

12



- iHV: indEx High Voltage Enclosures
- IP68 Enclosures
- Ex Heating Plates

13



- Ex e & Industrial Lighting
- Pressurisation and Purge Systems "Ex p"

14



- Paint Finish, Materials & Accessories



Custom Stainless Steel control stations designed to your exact specifications.

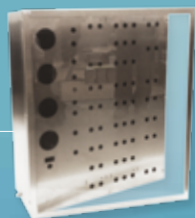


Custom iGRP enclosures designed to your exact specification.

ZONE 1, 21, 2 & 22 CONTROL STATIONS & GEAR

indEx can build, certify and wire complete systems for use in hazardous & industrial areas but also supply individual control gear, actuators and LED's so you can build your own system.

Call our sales team to discuss all your options.



Blow Out Preventer panel or BOP complete with protective perspex lid cover.



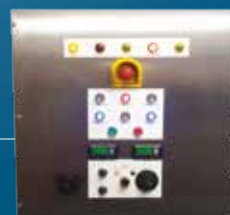
iGRP control stations, customised and certified to your exact requirements.



Enclosure cut outs and entries for control push buttons, lamps, contactors and HMI screen.



Empty enclosure cut outs and entries for control push buttons, lamps, contactors and HMI screen. Talk to our sales team for certification options.



Custom control stations designed to your specifications.



Control gear - LEDs, E stop, actuators, voltmeters and ammeters sold separately or integrated in our ATEX Ex de enclosures and certified.



Complete customisation allows for any size or shape required and all built to the highest quality.

HMI & MATRIX SCREENS

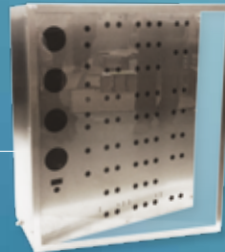
Cutting edge technology allows us to design, manufacture and deliver only the highest quality SIL products for use in safety critical areas. Not just robust and functional but also attractive and easy to integrate, indEx is your solution partner for all HMI Screens.



indEx HMI controller interface panel for driller cabinet.



Unique and bespoke designs for HMI applications.



BOP enclosure with protective over screen.



Driller operators control cabinet with protective over screen.



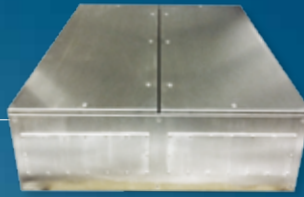
Remote HMI control enclosure.



Pedestal HMI.

iCE INDEX CABINET ENCLOSURES

indEx can manufacture the EXACT size cabinet you need. We can build, wire and certify or you can design your own custom enclosure and integrate components yourself. You can have the mounting plates within hours of your order and we can build in 316, 304, 3CR12 stainless steels and also painted mild steel.



Passive Cooling Cabinet for Safety Critical System for Leading North Sea and Global Operator.



Painted cabinets with additions.



iCE – indEx Cabinet Enclosure with HMI Screen for use on Turbo Compressor.



Unique double door HMI cabinet with multi-cam locks operated by a single handle.



We can fit glands to your specification on all our enclosures.



Replacement Ex nA enclosure for burner management systems housing critical safety equipment for a zone 2 application.



iCE with dual compartment and “extra slim” doors to allow for restricted panel access.



Unique and bespoke designs for cabinet enclosures.

iTB

Our iTB hinged standard enclosure range gives you the most modern, robust and cost effective solutions for hazardous and heavy industrial use.

- ✓ Any size up to 2000mmx1200mmx800mm for hazardous area.
- ✓ Any size for industrial.
- ✓ 316L, 304 Stainless and painted mild steel.
- ✓ ATEX, IEC Ex.
- ✓ All in one piece silicon expanded rubber gasket.
- ✓ Entry configuration to your requirements.
- ✓ Brushed finish as standard. Corrosion resistant for min 25 years.
- ✓ Impact resistant 7 N/m. Up to 10 N/m self certified.
- ✓ All fixtures and fittings in 316L steel.
- ✓ Innovative mounting assembly options.
- ✓ Various material thicknesses available on request.

Flexible external mounting solutions

Gland plates any side

All in one piece silicon expanded rubber gasket

Innovative hinge design

Industrial and hazard area solutions

Label options available

Optional locking solutions

Range of finishes and materials



STANDARD DIMENSIONS

All dimensions in mm

What size do you really need?

With indEx, custom comes as standard! Contact us to discuss your requirements.

Box size	Height	Width	Depth	Lid Gauge	Body Gauge	Hinges	Bolts
iTB 231513	230	150	130	1.2	1.2	2	2
iTB 302015	300	200	150	1.2	1.2	2	2
iTB 303015	300	300	150	1.2	1.2	2	2
iTB 403015	400	300	150	1.2	1.2	2	2
iTB 404015	400	400	150	1.2	1.2	2	2
iTB 504015	500	400	150	1.2	1.2	2	2
iTB 604020	600	400	200	1.5	1.5	2	2
iTB 755020	750	500	200	1.5	1.5	3	2
iTB 906020	900	600	200	1.5	1.5	3	3
iTB 1008020	1000	800	200	1.5	1.5	4	5
iTB 1208030	1200	800	300	1.5	1.5	4	5
iTB 12010030	1200	1000	300	1.5	1.5	4	5

Configurations: Details on terminal and gland entry configurations can be found in our online brochure at indexenclosures.com or from our sales team



CUSTOM AS STANDARD!



We can provide any size* and configuration of enclosure without the normal drawbacks of long lead-times and high costs. This has proven extremely popular amongst our customers globally. Contact us to discuss your enclosure requirements.

*Up to 2000x1200x800mm for ATEX and much larger for industrial and Zone 2 use.

FINISHES



Our standard stainless steel is a brushed satin finish. We keep 316L, 304L and 3CR12 stainless steels in stock in 1.2, 1.5, 2 & 3mm thicknesses with the same for mild steel. And with our local paint finishers we can offer a complete range of colours and finishes for any of our steel enclosures. Galvanized and electro polish finishes also available at short lead times.



Our standard iSTB enclosure range gives you the most modern, robust and cost effective solution for hazardous and heavy industrial use.

- ✓ Any size up to 600x600x300 for hazardous area.
- ✓ Any size for industrial.
- ✓ 316L, 304 Stainless and painted mild steel.
- ✓ ATEX, IEC Ex.
- ✓ All in one piece silicon expanded rubber gasket.
- ✓ Brushed finish as standard. Other options available.
- ✓ 316L is Corrosion resistant for min 25 years.
- ✓ Impact resistant 7 N/m.
- ✓ All fixtures and fittings in 316L steel.
- ✓ Innovative mounting assembly options.
- ✓ Various material thicknesses available on request.



STANDARD DIMENSIONS

All dimensions in mm

What size do you really need?

With indEx, custom comes as standard!
Contact us to discuss your requirements.

Box size	Height	Width	Depth	Lid Gauge	Body Gauge	Lid Fixings
iSTB101008	100	100	80	1.2	1.2	4
iSTB121209	120	120	90	1.2	1.2	4
iSTB151509	150	150	90	1.2	1.2	4
iSTB191910	190	190	100	1.2	1.2	4
iSTB163812	160	380	120	1.2	1.2	4
iSTB252512	250	250	120	1.2	1.2	4
iSTB254015	250	400	150	1.5	1.5	4
iSTB383820	380	380	200	1.5	1.5	4
iSTB604020	600	400	200	1.5	1.5	4
iSTB606030	600	600	300	1.5	1.5	4

Configurations: Details on terminal and gland entry configurations can be found in our online brochure at indexenclosures.com or from our sales team



ACCESSORIES

Our flexibility in design means we can offer a complete range of additional fittings and fixings – from glands, sun/ rain canopies, protective perspex over covers, door stays, gland plates, mounting plates, pedestals, cut outs, wall/bulk head custom fixings – and then self certify! indEx can cover your complete requirement.



iTBQT

Our iTBQT quarter turn / camlock hinged standard enclosure range gives you the most modern, robust and cost effective solutions for hazardous and heavy industrial use.

- ✓ Any size up to 2000mmx1200mmx800mm for hazardous area.
- ✓ Any size for industrial.
- ✓ 316L, 304 Stainless and painted mild steel.
- ✓ ATEX, IEC Ex.
- ✓ All in one piece silicon expanded rubber gasket.
- ✓ Entry configuration to your requirements.
- ✓ Brushed finish as standard. Corrosion resistant for min 25 years.
- ✓ Impact resistant 7 N/m. Up to 10 N/m self certified.
- ✓ All fixtures and fittings in 316L steel.
- ✓ Innovative mounting assembly options.
- ✓ Various material thicknesses available on request.



STANDARD DIMENSIONS

All dimensions in mm

What size do you really need?

With indEx, custom comes as standard! Contact us to discuss your requirements.

Box size	Height	Width	Depth	Lid Gauge	Body Gauge	Hinges	Qtr turn / Cam-locks
iTBQT 231513	230	150	130	1.2	1.2	2	2
iTBQT 302015	300	200	150	1.2	1.2	2	2
iTBQT 303015	300	300	150	1.2	1.2	2	2
iTBQT 403015	400	300	150	1.2	1.2	2	2
iTBQT 404015	400	400	150	1.2	1.2	2	2
iTBQT 504015	500	400	150	1.2	1.2	2	2
iTBQT 604020	600	400	200	1.5	1.5	2	2
iTBQT 755020	750	500	200	1.5	1.5	3	2
iTBQT 906020	900	600	200	1.5	1.5	3	3
iTBQT 1008020	1000	800	200	1.5	1.5	4	5
iTBQT 1208030	1200	800	300	1.5	1.5	4	5
iTBQT 12010030	1200	1000	300	1.5	1.5	4	5

Configurations: Details on terminal and gland entry configurations can be found in our online brochure at indexenclosures.com or from our sales team



CUSTOM AS STANDARD!



We can provide any size* and configuration of enclosure without the normal drawbacks of long lead-times and high costs. This has proven extremely popular amongst our customers globally. Contact us to discuss your enclosure requirements.

*Up to 2000x1200x800mm for ATEX and much larger for industrial and Zone 2 use.

FINISHES



Our standard stainless steel is a brushed satin finish. We keep 316L, 304L and 3CR12 stainless steels in stock in 1.2, 1.5, 2 & 3mm thicknesses with the same for mild steel. And with our local paint finishers we can offer a complete range of colours and finishes for any of our steel enclosures. Galvanized and electro polish finishes also available at short lead times.

iGRP

indEx iGRP enclosures can be made cost effectively, light weight and are highly durable, with good UV, chemical and bacterial resistance, complete with indEx usual rapid delivery, range of sizes, accessories and options.

- ✓ Sizes from 75x80x55mm up to 250x600x160mm for hazardous area.
- ✓ All fixings and lid screws tamper proof, captive and 316L as standard.
- ✓ ATEX, IEC Ex, GOST R
- ✓ ECP available for all sizes (please seek indEx sales advice for sizes below iGRP 121209).
- ✓ Silicon gasket as standard achieving IP66 & 67.
- ✓ Entry configuration to your requirements where possible. Tapped entries provided.
- ✓ Antistatic, with high UV, dust, fat, oils, bacterial resistance and LSOH.
- ✓ Impact resistant 7 N/m. Up to 10 N/m self certified.
- ✓ Din rail support or mounting plate options.
- ✓ Empty component "U" and fully built apparatus "X" enclosures available.
- ✓ indEx full design, integration and certification for terminal and control gear enclosures.



316L stainless steel bolts

Black Carbon loaded GRP means much greater UV protection & anti static properties

LOSH Gasket

Hinges are available

17 different sizes

ECP and earth stud available in different materials



STANDARD DIMENSIONS

All dimensions in mm

indEx can add in terminals, tapped entries and fully certify for up to zone 1 & 21 in 17 different sizes

Box size	Height	Width	Depth
iGRP 070805	75	80	55
iGRP 071105	75	110	55
iGRP 071605	75	160	55
iGRP 071905	75	190	55
iGRP 121209	120	122	90
iGRP 122209	120	220	90
iGRP 161609	160	160	90
iGRP 162609	160	260	90
iGRP 163609	160	360	90
iGRP 252512	250	255	120
iGRP 252516	250	255	160
iGRP 254012	250	400	120
iGRP 254016	250	400	160
iGRP 256012	250	600	120
iGRP 256016	250	600	160
iGRP 404012	405	400	120
iGRP 404020	405	400	200

Configurations: Details on terminal and gland entry configurations can be found in our online brochure at indexenclosures.com or from our sales team

ACCESSORIES

Our flexibility in design means we can offer a complete range of additional fittings and fixings – from glands, sun/ rain canopies, protective perspex over covers, door stays, gland plates, mounting plates, pedestals, cut outs, wall/bulk head custom fixings – and then self certify! indEx can cover your complete requirement.





Cathodic protection enclosure with inbuilt framework and cable tray.



Zone 1 Ex de control cabinet. Our customer fitted their own control gear and certified within weeks of delivery!



Enclosures with strengthened sides and lid ensure no deformation when dipped in the galvanizing process.

CUSTOM AS STANDARD!

Although we have a standard range we build to order, and as such the size is only limited to 2000mmx1200mmx800mm for ATEX & IEC Ex, much larger for industrial use, in a range of gauges and finishes.



Zone 2 Pillar enclosures for use in Russia.

CUSTOM DESIGN

Our knowledge and experience together with state of the art laser profiling equipment allow us to provide full solutions for most industrial and hazardous area requirements. Contact our sales team and find out how we can help you.



Industrial HMI screen with 5mm Stainless plate pedestal, now in use in 2 paper mills in the UK.



Industrial battery enclosures, widely used for solar farms.



Sun/dust/rain canopies, fitted or sold separately to your dimensions.



Bespoke enclosures to your exact requirements.



Cathodic protection including instrument screen for use in aggressive environments.

LINE BUSHINGS

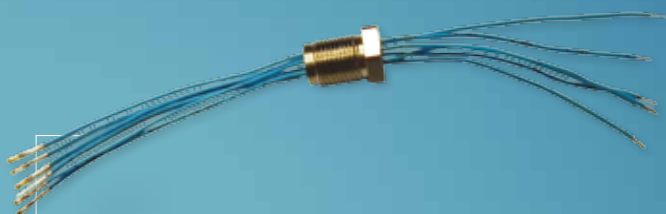
Whether you require a standard or customised solution, indEx Line bushings offer an excellent and cost effective solution to electrically connect equipment in potentially explosive atmospheres.

So by varying the designs, line bushings can even be used in intrinsically safe areas for measuring, control or energy limited circuits, but are generally used to connect flameproof enclosures (Ex d) to other flameproof enclosures or to indEx Ex e terminal enclosures to ensure a Zone 1 Ex de connection is possible.

Full details of standard line bushings are available on our website, but please call our dedicated sales team to discuss a full solution for your exact requirement.



Line bushings can be used in Ex d and e enclosures and offer a very cost effective solution of pairing enclosures without the need for expensive tank bushings or glands.



Intrinsically safe options available, even rotating bushes for use in all round vision & detection.



Custom Line bushes available.



Ex d enclosure with line bushing.

EX d FLAMEPROOF ENCLOSURES

An Ex d Flame proof enclosure is made by die casting aluminium or steel and will contain an explosion if one occurs. They have been around for decades and allow integration of most components, certified or not. indEx can offer built and certified Ex d enclosures and welded stainless steel 316L enclosures are also available.

Both EJB and GUB enclosures are available. EJB is used for IIA & IIB gas groups and have bolted lids.



GUB Ex d enclosures are used for group IIC gases and have screw top lids which makes the flamepath much longer than in the EJB



We usually supply Ex d Aluminum die cast enclosures with a painted finish. This is industry standard but we can supply stainless steel if needed.

iHV HIGH VOLTAGE ENCLOSURES

Often used for down hole pumps offshore or platform and ships hoists and lifts, indEx has developed a unique high voltage enclosure for use in a Zone 2 area. Zone 1 can also be built but requires a certification process by a third party such as Sira. We are happy to work with you to achieve the solution you need, call our sales team for more information.



iHV enclosures offer complete safety and a unique but tried and tested method for terminating high tension conductors in a hazardous area.



Complete safety assured!

IP68 ENCLOSURES

Complete immersion at a specified depth and time means enclosure design, build and integrity is paramount. We can work with you to provide a solution that meets your exact requirement.



This is an example of an indEx IP68 solution used by a world leader in cable design, construction and installation.

EX HEATING PLATES

Cold and/or condensation can cause havoc with apparatus in enclosures no matter how well they are constructed so indEx can offer an exclusive range of Ex heating plates to minimize any apparatus damage from internal moisture build up.



Heating plates keep the enclosure above ambient if needed but also offer anti condensation so can keep the enclosure at a steady internal temperature to protect safety critical equipment.

EX e AND INDUSTRIAL LIGHTING

We often take lighting for granted but it becomes even more critical for workers in exposed and hazardous locations. Lamps and fittings must be dependable, durable, cost effective and with a long life span. indEx can offer an exclusive range of the highest quality lighting possible, with a full range of solutions and accessories.



Ex e Lighting.



Ex e Lighting.

EX p: PRESSURISATION SYSTEMS

Industry standard Ex p systems need their enclosures to be purged prior to energising. BUT this is not part of the standard and is unnecessary and costly.

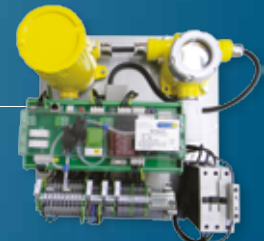
So with our partners, and a forward thinking approach to product innovation, we use the state of the art Quinguard module, used in conjunction with our Ex p certified enclosures.

Our system is unique in that there is no need to purge, ever. This saves an enormous amount of instrument gas, cuts out re-pressurisation stresses on the enclosure and its gaskets, dramatically cuts start up times down from hours to seconds and reduces overall running costs to fractions of current systems.

Full details available from our sales team.



An Ex p enclosure.



Our Quinguard module is unique in that no purging is required prior to energising. Not only state of the art technology but cost effective and easy to integrate in to your indEx enclosure. We will also fully certify.

Purge system with HMI screens.



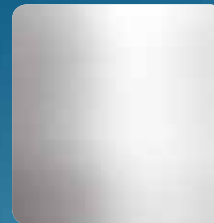
PAINT FINISH AND MATERIALS

We pride ourselves on being a custom enclosure designer, fabricator, assembler and distributor and as you would expect have a wide choice of materials and finishes to offer.

Please speak with our sales team and we will be more than happy to advise on the best material and finish for your needs.



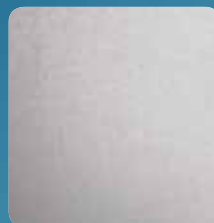
Standard brush finish



Stainless Steel 3CR12, 304L, 316L, Duplex



Shot blast



Orbital finish



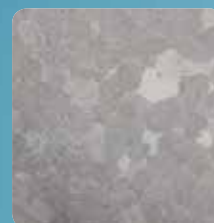
Electro-polished



Custom paint finish



Standard paint



Mild steel, galvanised



GRP

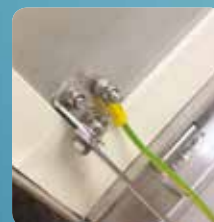
ACCESSORIES

A full range of accessories are available including:

- Earth bars
- Cable glands
- Terminals
- Mounting plates
- Mounting feet
- Label options
- Steel gauge options
- Electro polishing
- Paint
- Custom packaging
- Framework
- Galvanising
- Tube/pipe clamps
- Viewing windows
- Sun/rain canopies
- Louvre and other venting options
- Bespoke metal fabrications
- Double skin enclosures



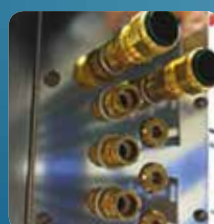
Door stays



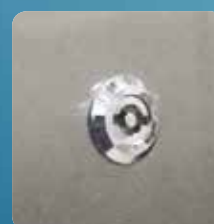
Earth bonding



Control gear



Entries and gland plates to suit



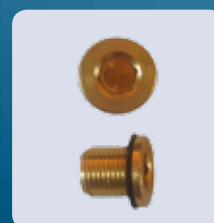
Multiple cam locking



Your laser engraved logo



Cable glands



Plugs



Drains

SOME CUSTOMERS AND PROJECTS *indEx* HAS SUPPLIED

Costain

Various UK sites

Atlas Copco

Large HMI cabinet
for North Sea

Siemens

Double and triple door
cabinets for global sites

Doosan Babcock

Nuclear site UK

Norgren

Pneumatic enclosures
UK sites

Centrax

Turbo compressors,
various global sites

Hima Sella

Ex nR enclosures
for UK refinery

Stahl

Various North Sea sites

Routecco

Various UK sites

Exloc

Atex driller
cabinets for US

Aker Kaverner

Specialized cooling
enclosure for use
in North Sea

Jacobs

Terminal enclosures,
UK CHP site

Prysmian

iHV enclosures

Centrax

Various enclosures for
turbo compressors

The logo for indEx, with 'ind' in red and 'Ex' in white.

Your solution partner.

Call
01233 638311

Email
sales@indexenclosures.com

Visit
www.indexenclosures.com

indEx House
Unit 10 Montpellier Business Park
Dencora Way
Ashford
Kent TN23 4FG
UK



indEx